

iM3[®] STRAW

Active ingredient, silver*: 17.5%
Inert ingredients: 82.5%

*Bound to hydrogen form weak acid gelular cation exchange resin

All-In-One Dental Microbiological Cartridge

DIRECTIONS FOR USE

IT IS A VIOLATION OF FEDERAL LAW TO USE THIS PRODUCT IN A MANNER INCONSISTENT WITH ITS LABELING.

INITIAL INSTALLATION: Unscrew the water bottle on your dental unit exposing the pickup tube. Cut the existing pickup tube to appropriate length so, when the Straw Cartridge is attached, it will extend to within 1/4" of the bottom of the bottle. Insert the barbed end of the Luer Lock fitting onto the end of the pickup tube until it is flush with ridged section. Remove the shrink wrapping from the Straw. Hold the Luer Lock firmly and twist the Straw to the right to tighten onto the Luer Lock. Fill bottle with distilled quality water. Fill the bottle, leaving an air space of at least 1" from the top of the bottle (do not over fill the bottle - adequate airflow is necessary to ensure proper pressurization).

A sticker is provided with the iM3 Straw where you can record the date your replacement iM3 Straw will be needed (One year later).

INITIAL TREATMENT: iM3 Straws are engineered to automatically produce a "Shock" treatment after initial connection and treatment of dental water. Slowly purge the waterlines attached to the dental unit into a cup until you see the light blue color. The colorant is an indicator the Shock product is in the line(s). Allow lines to remain unused for a minimum of 12 hours. For best results, allow Shock to remain in the line(s) over the weekend.

Prior to use of dental unit, flush dental lines until blue color disappears (approximately 4 ounces).

MAINTENANCE TREATMENT: Fill water bottle with distilled water. The dental water is automatically treated as it runs through the Straw Cartridge. Replace the Straw Cartridge per the Straw Capacity & Replacement Schedule.

PRECAUTIONARY STATEMENTS

HAZARDS TO HUMANS AND DOMESTIC ANIMALS - CAUTION: In the event of a rupture of the cartridge, avoid contact with the silver ion exchange resin which may cause eye and skin irritation. Avoid direct contact with eyes, skin and clothing. Wash thoroughly with soap and water after handling and before eating, drinking, chewing gum, using tobacco or using the toilet. Remove and wash contaminated clothing before reuse. Place debris into a sealed plastic bag and discard in trash.

ENVIRONMENTAL HAZARDS: This pesticide is toxic to fish and aquatic invertebrates.

FIRST AID: If in eyes: Hold eye open and rinse slowly and gently with water for 15–20 minutes. Remove contact lenses (if present) after the first 5 minutes then continue rinsing. **If on skin:** Take off contaminated clothing. Rinse skin immediately with plenty of water for 15–20 minutes. Call a poison control center or doctor for treatment advice.

STORAGE: Store in a cool dry area out of direct sunlight.

STORAGE AND DISPOSAL: Do not contaminate water, food or feed by storage or disposal.

PESTICIDE DISPOSAL: Drain remaining liquid from cartridge and discard in trash.

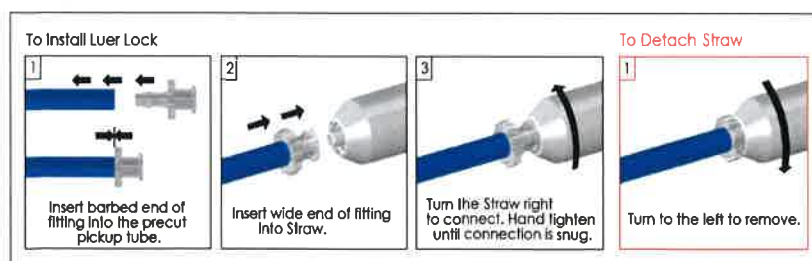
CONTAINER HANDLING: Dispose of empty packaging in trash.

US EPA Registration NO. 83315-2

EPA EST. NO. 83315-CO-001

PATENT NO. 6,991,736

SUPPLEMENTAL USER INSTRUCTIONS:



The iM3 Straw includes a Luer Lock.

Proper installation of the luer lock is shown in the diagrams. It is important to cut the existing pickup tube to the proper length so that the bottom of the iM3 Straw is at least a 1/4" from the bottom of the bottle.